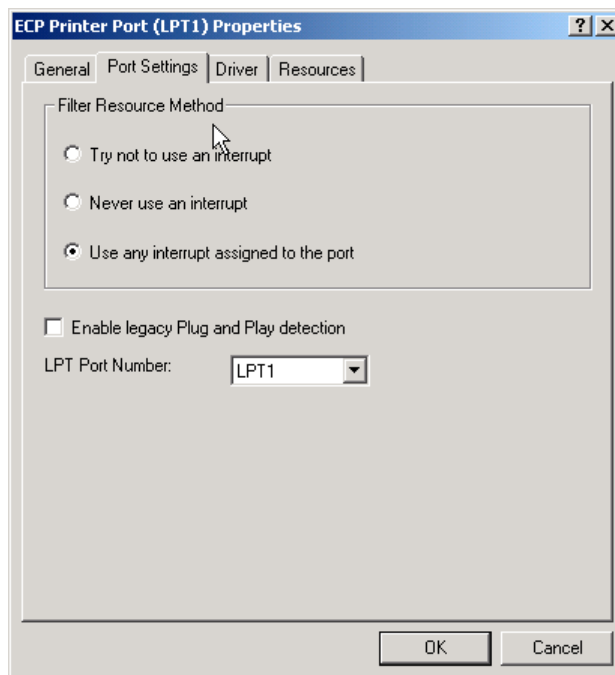


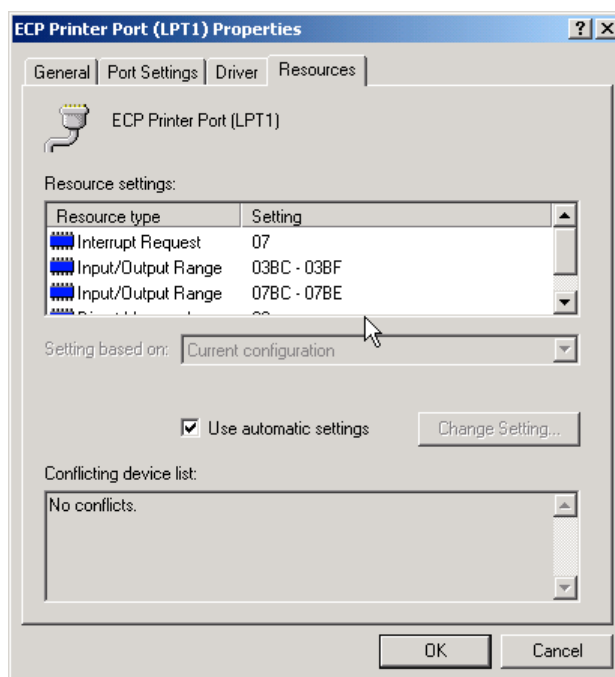
## Using the PCAN-Dongle under Win2000/XP

To install the PCAN-Dongle under Win2000 or XP the following settings are required:

1. Switch the Parallelport Mode in the BIOS to ECP (not „ECP/EPP“, not „EPP“).
2. The version of the driver PEAKCAN.SYS or PCAN\_DNG.SYS should be V2.30 or higher. (See the information dialog under control panel „CAN-Hardware“. If you are using the PCAN-Light-driver you will find the driver version under help->about in the PCAN-View program).
3. The Interrupt of the parallelport must be activated by the devicemanager. You have to be Administrator to change these settings. Click on „ECP Printer Port LPT1“ and use the right mouse button to click on „Properties“. Goto „Port Settings“ to find the following dialog:



4. Please click on „Use any interrupt assigned to the port“. Click on OK and reopen the properties dialog „Resources“ to view the I/O Range and Interrupt Request for the parallelport:



5. Install the PCAN-Dongle with the I/O address and IRQ of the parallelport under „CAN-Hardware“ in the control panel or in the PCAN-View program if you are using the PCAN-Light driver.