



PCAN-Explorer 7 | License Container Swapping Guide

This is the License Container Swapping Guide for PCAN-Explorer 7. It shows an example to swap a license from a computer to a connected license dongle. You can activate your license(s) either in the local Windows environment (usually where your PCAN-Explorer is installed) or on an external USB license dongle. These locations are called containers. It is possible to swap between two containers, by deactivating the license in one container and activating it again in another one.

Note: After (re-)activation of a license, it cannot be deactivated within 24 hours.

Before You Start

Before you start, make sure that you have your **ticket number** available, that you have received from PEAK when purchasing your PCAN-Explorer 7 license. You need a **Windows computer** (process not possible with Linux or MacOS), an **internet connection**, the **PEAK License Manager** (already installed with PE7) and the **Wibu CodeMeter User Runtime** (already installed with PE7).

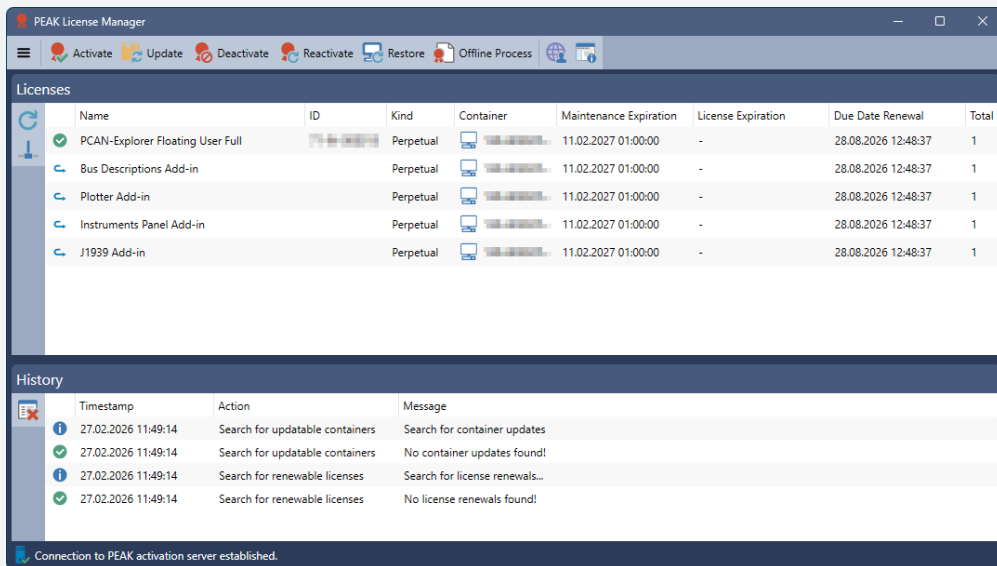
Now you're all set to swap containers!



PCAN-Explorer 7 | License Container Swapping Guide

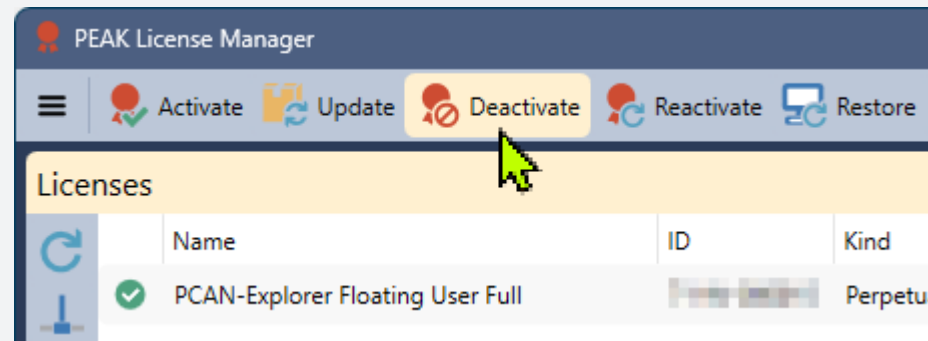
Step 1

Start the **PEAK License Manager**, e. g. via the Windows start menu.



Step 2

In the **PEAK License Manager**, click on the *Deactivate* button.





PCAN-Explorer 7 | License Container Swapping Guide

Step 3

Enter your **ticket number**.

Deactivation of licenses > Select Ticket

Enter Ticket

TICKET

XXXXX-XXXXX-XXXXX-XXXXX-XXXXX

Cancel Back Next

Step 4

If several containers with licenses are available on your computer, **select the container** where your license to be moved is located. The available licenses for deactivation are listed here.

Available Container

CmDongle
Serial: [REDACTED]
Name: [REDACTED]

CmActLicense
Serial: [REDACTED]
Name: Universal Firm Code CmActLicense [REDACTED]

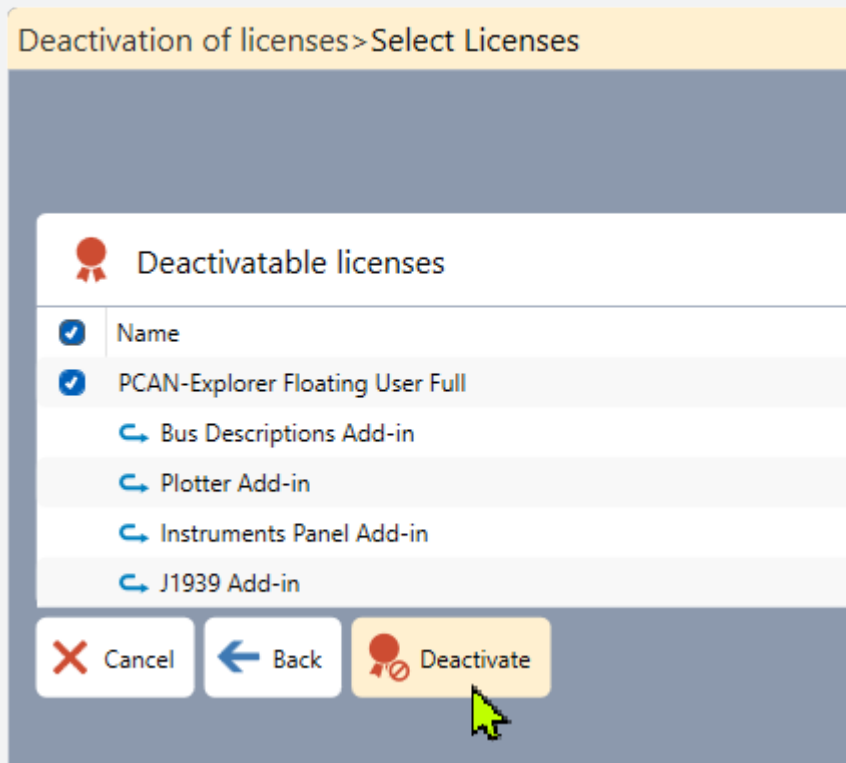
Cancel Back Next



PCAN-Explorer 7 | License Container Swapping Guide

Step 5

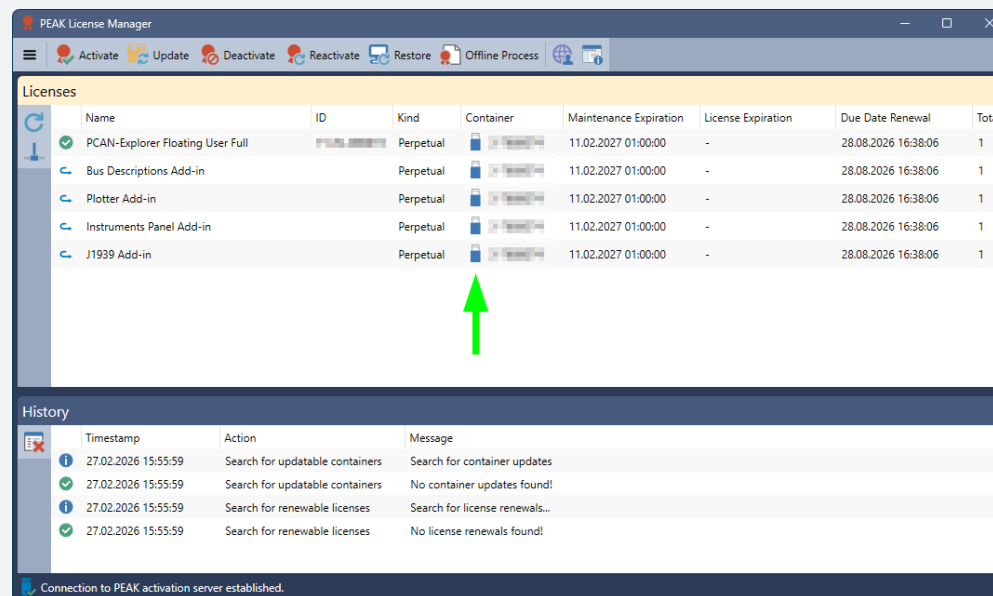
Click the *Deactivate* button below to start the first part of the **swapping process**. This might take some seconds.



Step 6

PCAN-Explorer 7 opens and you can start exploring!

Repeat steps 2 to 5, but now, click on the *Activate* button instead and **select another container**.



Congratulations, you can now use the license being placed in another container!